

RESOLUTION NO. 2007-26

THE CITY OF SALEM RESOLVES AS FOLLOWS:

Section 1. THAT property located at the southerly terminus of Elliot Street NW, Christopher Street NW and Cherry Blossom Drive NW within Brush College Heights No. 2, of a certain deed executed by DECAL OREGON, INC. an Oregon corporation, Owner, dated April 13, 2006, recorded in Polk County Deed Records as document number 2006-009619, on June 13, 2006, be and the same is hereby dedicated for street and right-of-way.

Section 2. This resolution is effective upon adoption.

ADOPTED by the Council this _____ day of _____, 2007.

ATTEST:

CITY RECORDER

Approved by City Attorney: _____



Checked by: Jon Bolliger

BRUSH COLLEGE HEIGHTS NO. 2

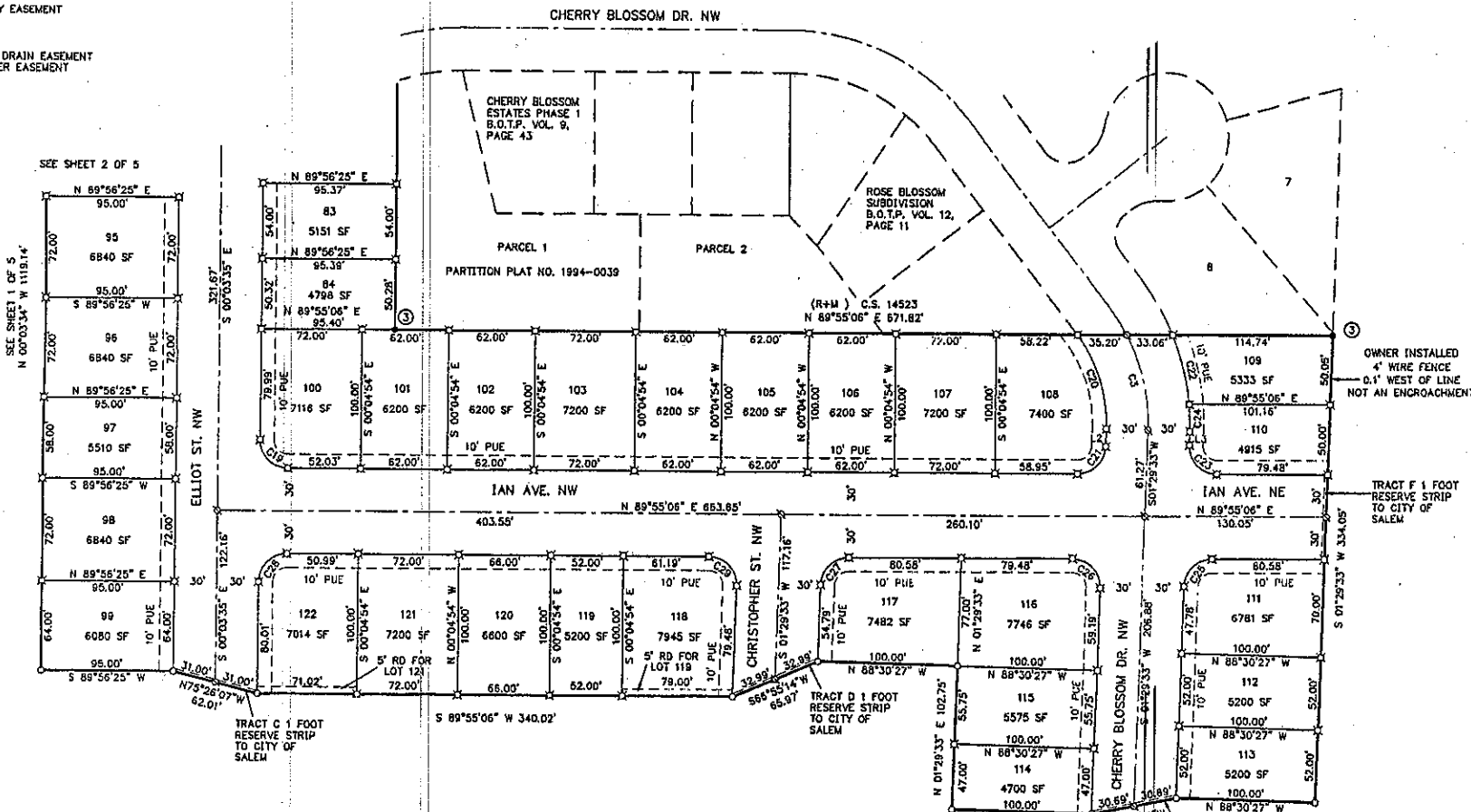
IN ALL 1/4'S SEC. 8, T. 7 S., R. 3 W., W.M.
CITY OF SALEM, POLK COUNTY, OREGON

BY:
MULTI/TECH ENGINEERING SERVICES, INC.
1155 13TH ST. SE
SALEM, OREGON 97302
503-363-9227

REGISTERED
PROFESSIONAL
LAND SURVEYOR
Joseph P. Fielding
OREGON
JAN 21, 1997
JOSEPH P. FIELDING
2805
RENEW BY: 12/31/07

2006-09619

- - MONUMENT FOUND AS NOTED
 - SET 5/8" X 30" IRON ROD W/YELLOW PLASTIC CAP MARKED MULTITECH ENG.
 - ⊗ 5/8" X 30" IRON ROD W/ALUMINUM CAP MARKED MULTITECH ENG. TO BE POST-MONUMENTED WITHIN THE TIME SPECIFIED IN THE SURVEYOR'S CERTIFICATE. SET ON
 - ⊕ 5/8" X 30" IRON ROD W/YELLOW PLASTIC CAP MARKED MULTITECH ENG. TO BE POST-MONUMENTED WITHIN THE TIME SPECIFIED IN THE SURVEYOR'S CERTIFICATE. SET ON
- (R+M) = RECORD & MEASURED BEARING & DISTANCE PER C.S. 14523 OR AS NOTED.
- B.O.T.P. = BOOK OF TOWN PLATS
COR. = CORNER
C.S. = COUNTY SURVEY
I.P. = IRON PIPE
I.R. = IRON ROD
PUE = PUBLIC UTILITY EASEMENT
P. = PAGE
R. = REEL
V. = VOLUME
RD. = PRIVATE ROOF DRAIN EASEMENT
SSE = SANITARY SEWER EASEMENT



SCALE: 1" = 60'
DATE: 03/08/06

- MONUMENT NOTES
- ① 5/8" IR YPC MULTITECH FLUSH. C.S. 14523. HELD FOR CONTROL.
 - ② 1" IP 8" HIGH. FOUND IN C.S. 14523. HELD FOR CONTROL. REPLACED WITH 5/8" IR YPC MULTI/TECH SET FLUSH.
 - ③ 3/4" IP 10" DEEP. C.S. 5010. HELD FOR CONTROL. REPLACED WITH 5/8" IR YPC MULTI/TECH SET FLUSH.

INFORMATION ONLY

06050606