

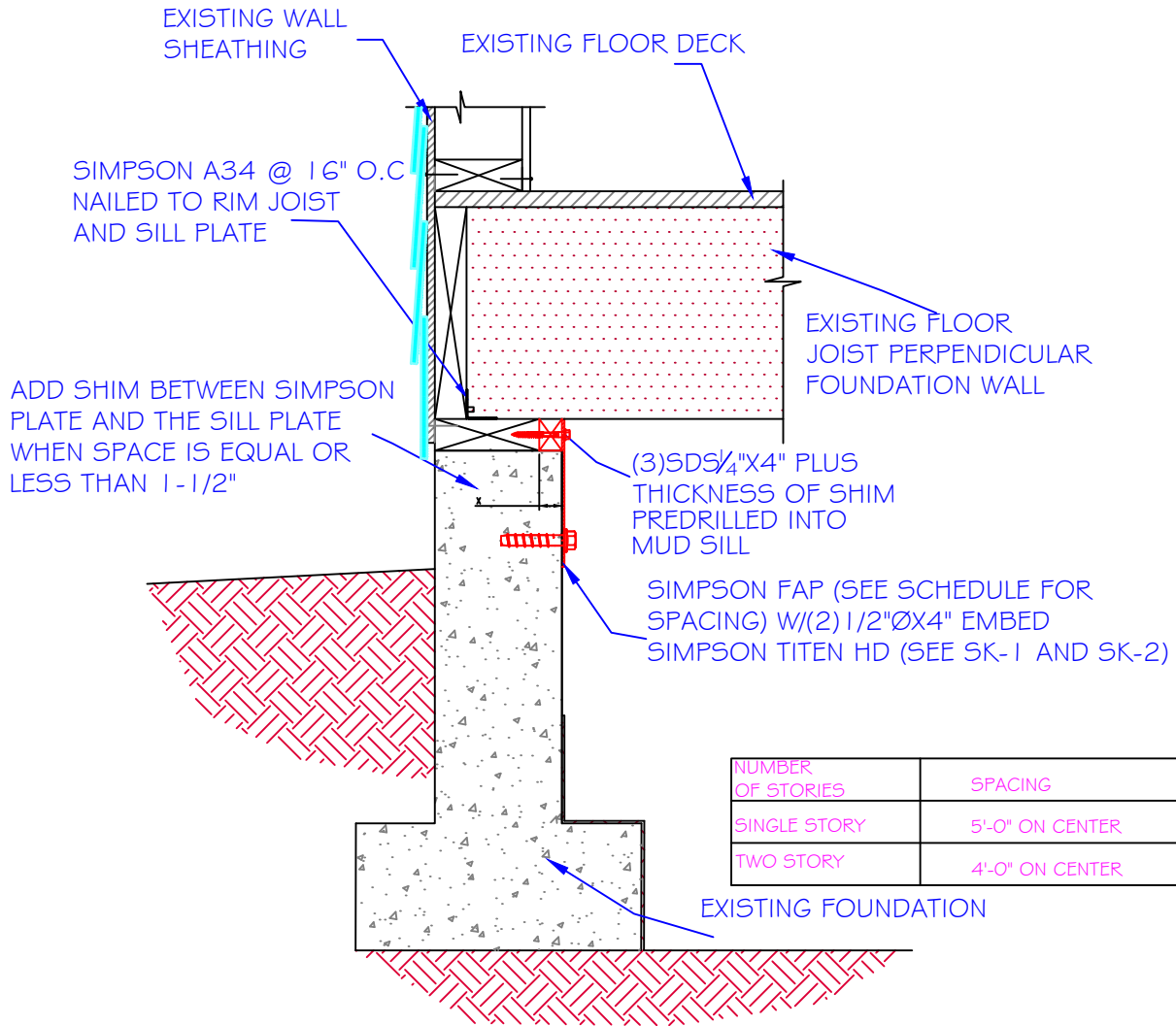
SK-1 (FAP PLATE)



SK-2 (TITEN SCREW)



SK-3 (SDS SCREW)



SILL PLATE TO FOUNDATION CONNECTION W/FAP
FLOOR FRAMING PERPENDICULAR TO STEM WALL



555 LIBERTY STREET SE ROOM 320
 SALEM OREGON 97301-3513
 TEL: (503) 588-6256

CITY OF SALEM
 COMMUNITY DEVELOPMENT DEPARTMENT
 BUILDING AND SAFETY DIVISION

STANDARD DETAIL

SILL PLATE/MUDSILL TO FOUNDATION
 CONNECTION WITH SIMPSON STRONG
 TIE FAB FOUNDATION ANCHOR PLATE
 - FAP FOUNDATION ANCHOR PLATE

Revised:	Number
Project No.:	2
Date:	
Scale:	