

GUIDING PRINCIPLES



Housing: Provide a variety of housing types throughout Salem to accommodate the needs, abilities, and preferences of all residents, including ensuring an adequate supply of housing that is affordable and accessible for current and future generations.



Transportation: Provide a complete, integrated transportation network that ensures safe and efficient travel by all modes and enhances connectivity for residents and businesses.



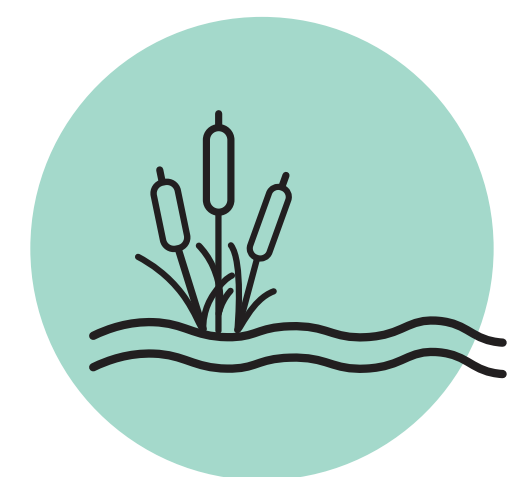
Economic Development and Employment: Strengthen the economy of Salem, while promoting a diverse range of employment opportunities and improving access to jobs and job training.



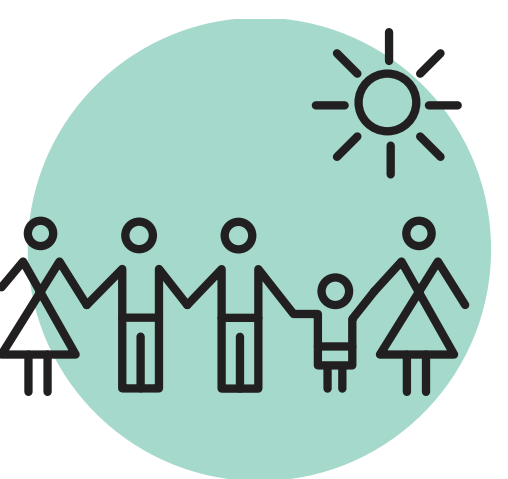
Mixed Use: Allow mixed-use development more broadly in Salem to improve access to jobs and services and to promote flexibility in the use of properties.



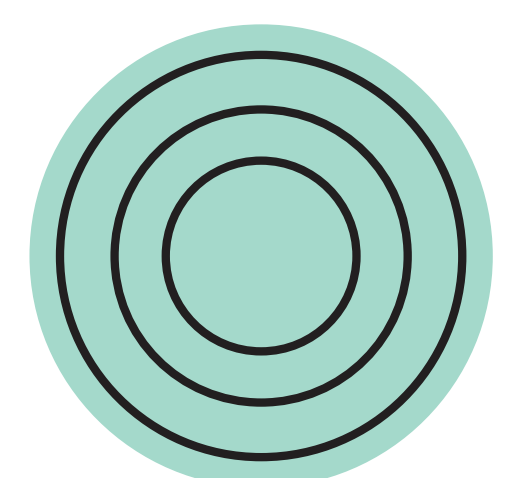
Parks and Recreation: Develop, enhance, and expand parks and recreational facilities - and access to these amenities - to better serve residents of all ages, abilities, and cultures.



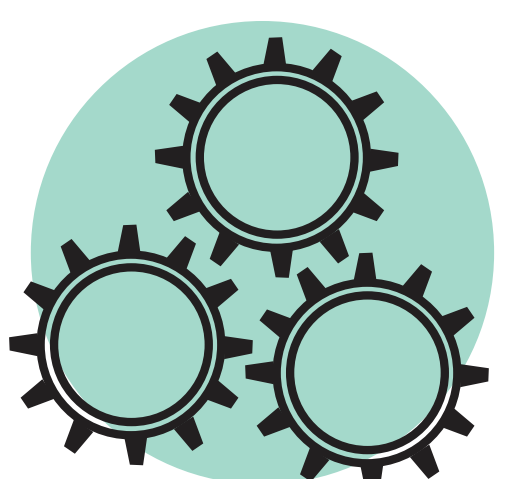
Natural Resources and Environment: Preserve and protect natural areas and expand green spaces, while reducing negative impacts of growth on the environment.



Community Services: Promote access to community spaces and services throughout Salem.



Culture & Identity: Celebrate Salem's diversity by highlighting local art, culture, and heritage.



Equity: Use an equity lens when engaging the public in policy decisions and when assessing and implementing actions to ensure that all Salem residents have access to opportunities to advance their well-being and that the benefits and impacts of growth are shared.