

To: Polk County Planning Commission and County Commissioners

From: E.M. Easterly /s/ {775 Fir Gardens St NW Salem, OR 97304}

Date: October 26, 2016

Re: Rebuttal of the Easterly October 19, 2016 written testimony regarding the Polk County Goal 15 declaration.

Upon review of the October 19, 2016 Easterly testimony I realized that the statement from the October 5, 2016 staff memo page 6 to Polk County Board of Commissioners and Polk County Planning Commissioners quote claims “the Preferred Alternative within the Greenway is entirely within Salem’s land use jurisdiction”. The full statement is cited below.

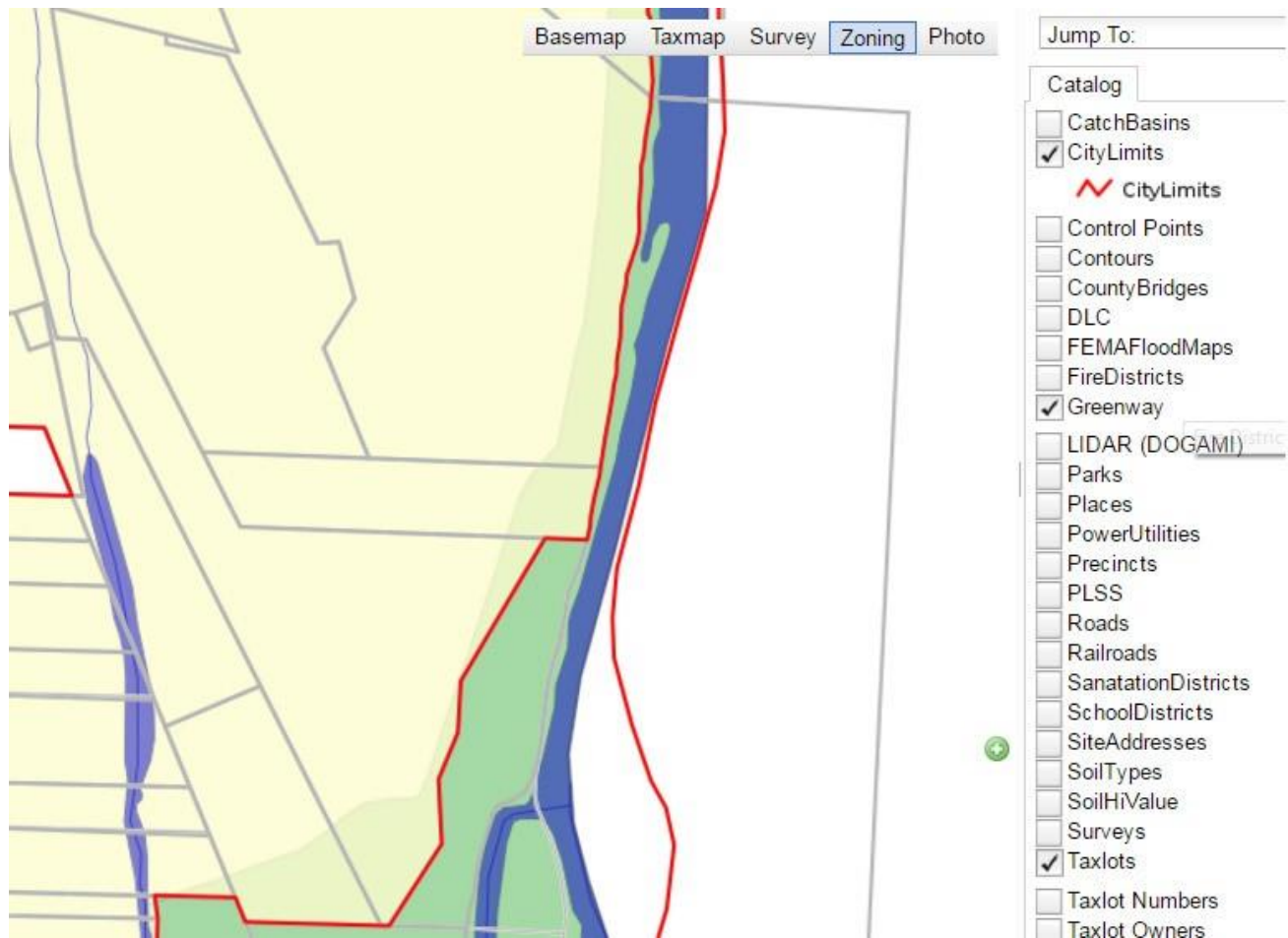
- The City of Salem is taking an exception to Goal 15 (Willamette River Greenway) as part of the consolidated plan amendments. However, the portion of the Preferred Alternative within the Greenway is entirely within Salem’s land use jurisdiction, and Polk County is not taking exceptions to any statewide goals.

If the above declaration is correct, there is no basis for the Easterly October 19th Goal 15 argument.

Below is a photo graphic taken from the Marion County staff memo which addresses the City of Salem proposed Urban Growth Boundary extension across land that is under Polk County jurisdiction. Note please the red line on the eastern (right side) of the graphic. That line is the eastern Polk County City of Salem boundary which includes a portion of the western shore of the Willamette River.



Below is a second graphic taken from the Polk County geographic data base that shows the Willamette Greenway and the same eastern City of Salem boundary.

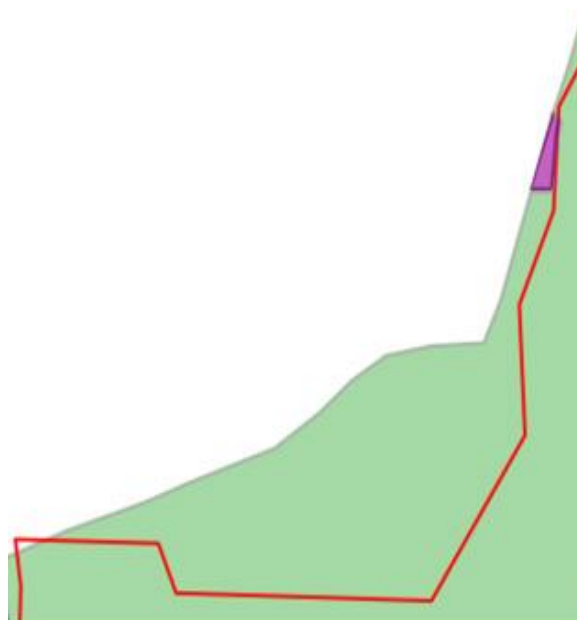


In the above graphic red lines identify the Salem City Boundary, the dark green is Salem City park land, the light yellow is Polk County land not inside the City of Salem, white indicates other land inside the City of Salem and the light green color overlaying the light yellow identifies the Willamette River Greenway in Polk Co. but outside Salem.

By carefully comparing the two graphics it is clear the proposed UGB expansion will cross a portion of the Willamette River Greenway which is wholly within Polk County. You can confirm this by going to <http://maps.co.polk.or.us/geomoose2p/> and enlarge the Polk County web map to show both the Salem City Limits and the Willamette Greenway western boundary. The Willamette Green extends west of the eastern Salem City Limits in Polk County. The Willamette Green is **not** “entirely within Salem's land use jurisdiction” as the October 5th staff memo inaccurately states.

The small graphic on the next page offers a close up of Polk County Webmap that shows the relationship between the Polk County Willamette Greenway and the Salem City Limits. The purple area reflects a part of the Willamette Greenway outside the City of Salem current land use jurisdiction that will be included in the proposed City of Salem

River Crossing needed UGB expansion.



Therefore, the October 19th Easterly testimony accurately identifies the Polk County